

# Decision-Making at East Hampshire District Council

( ) denotes number of Councillors appointed

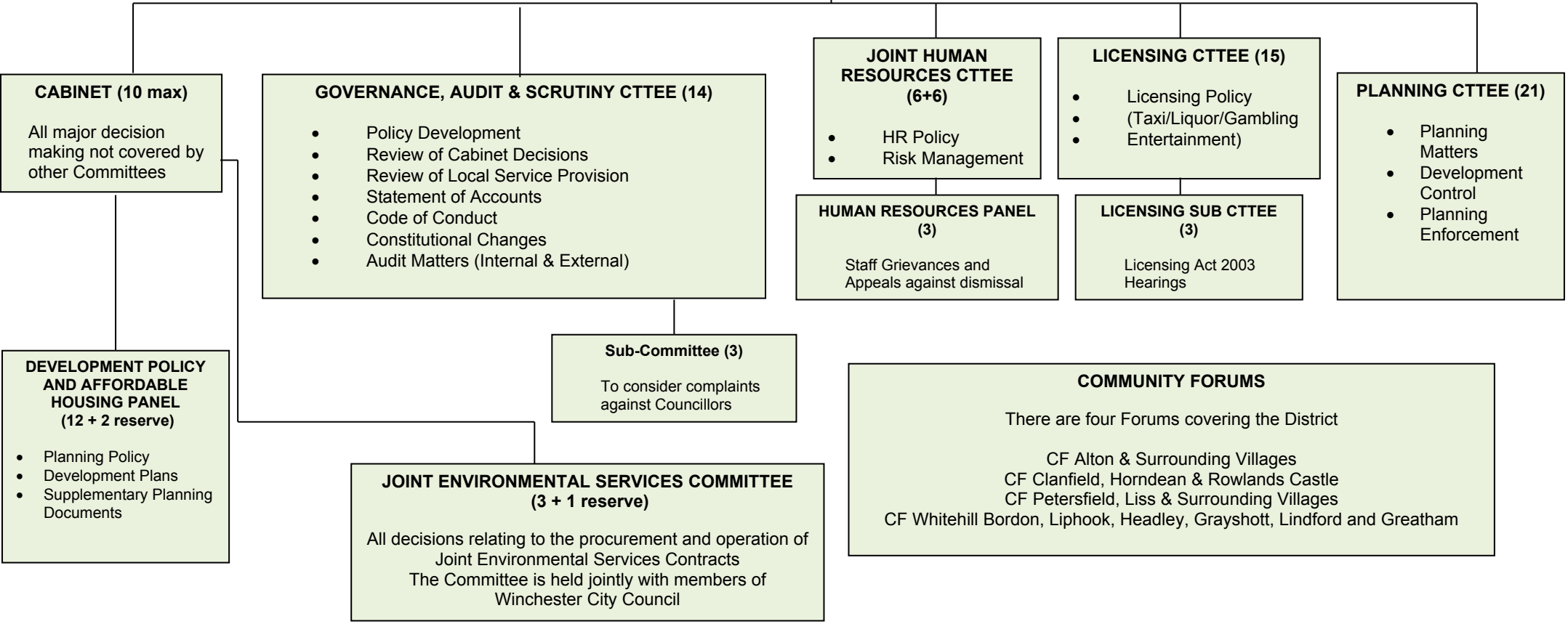
Council is chaired by the Chairman

Cabinet is chaired by the Leader

Joint HR Committee is comprised of 6 Havant Councillors and 6 East Hampshire Councillors

**COUNCIL (43)**

- Policy Framework
- Budget Framework
- Appointment of Chairman
- Appointment of Committees/Panels



**CABINET (10 max)**

All major decision making not covered by other Committees

**GOVERNANCE, AUDIT & SCRUTINY CTTEE (14)**

- Policy Development
- Review of Cabinet Decisions
- Review of Local Service Provision
- Statement of Accounts
- Code of Conduct
- Constitutional Changes
- Audit Matters (Internal & External)

**JOINT HUMAN RESOURCES CTTEE (6+6)**

- HR Policy
- Risk Management

**LICENSING CTTEE (15)**

- Licensing Policy (Taxi/Liquor/Gambling Entertainment)

**PLANNING CTTEE (21)**

- Planning Matters
- Development Control
- Planning Enforcement

**HUMAN RESOURCES PANEL (3)**

Staff Grievances and Appeals against dismissal

**LICENSING SUB CTTEE (3)**

Licensing Act 2003 Hearings

**DEVELOPMENT POLICY AND AFFORDABLE HOUSING PANEL (12 + 2 reserve)**

- Planning Policy
- Development Plans
- Supplementary Planning Documents

**Sub-Committee (3)**

To consider complaints against Councillors

**JOINT ENVIRONMENTAL SERVICES COMMITTEE (3 + 1 reserve)**

All decisions relating to the procurement and operation of Joint Environmental Services Contracts

The Committee is held jointly with members of Winchester City Council

**COMMUNITY FORUMS**

There are four Forums covering the District

- CF Alton & Surrounding Villages
- CF Clanfield, Horndean & Rowlands Castle
- CF Petersfield, Liss & Surrounding Villages
- CF Whitehill Bordon, Liphook, Headley, Grayshott, Lindford and Greatham